

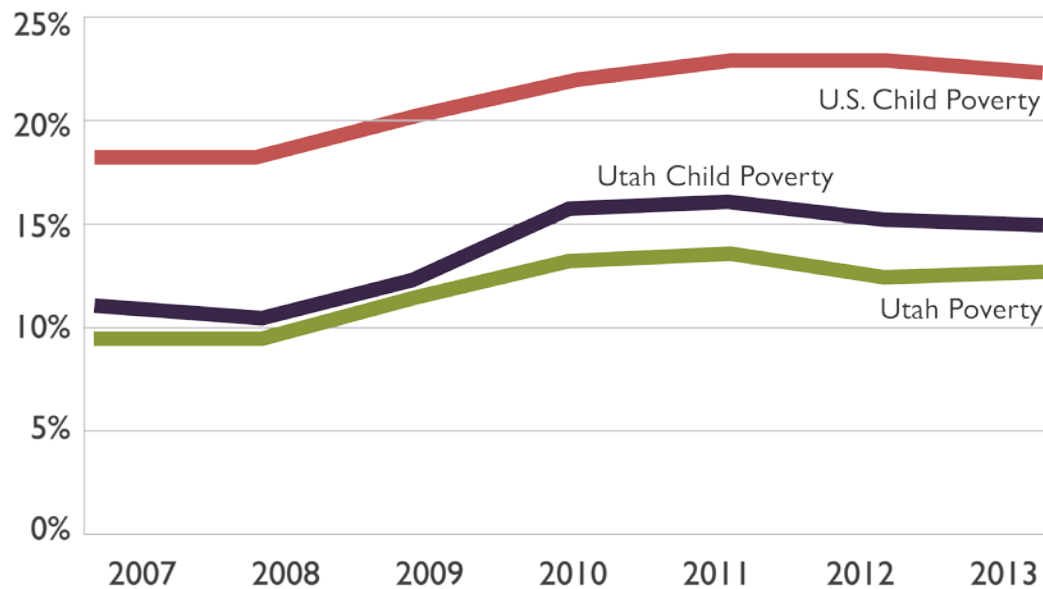
ADDRESSING INTERGENERATIONAL POVERTY



Rural Impact Project, TANF, and other Partnerships

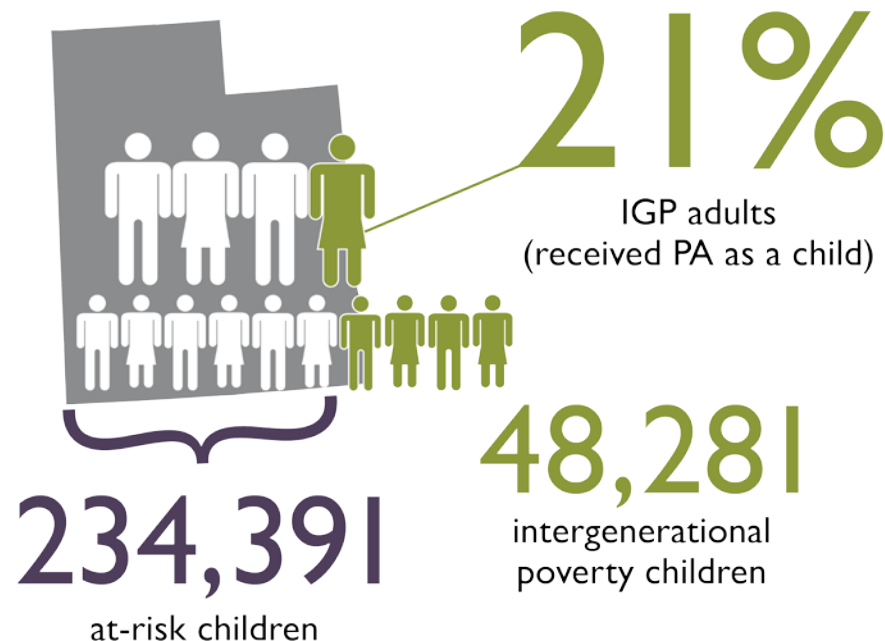
339,300 UTAHNS BELOW POVERTY

Child Poverty Slowly Declines



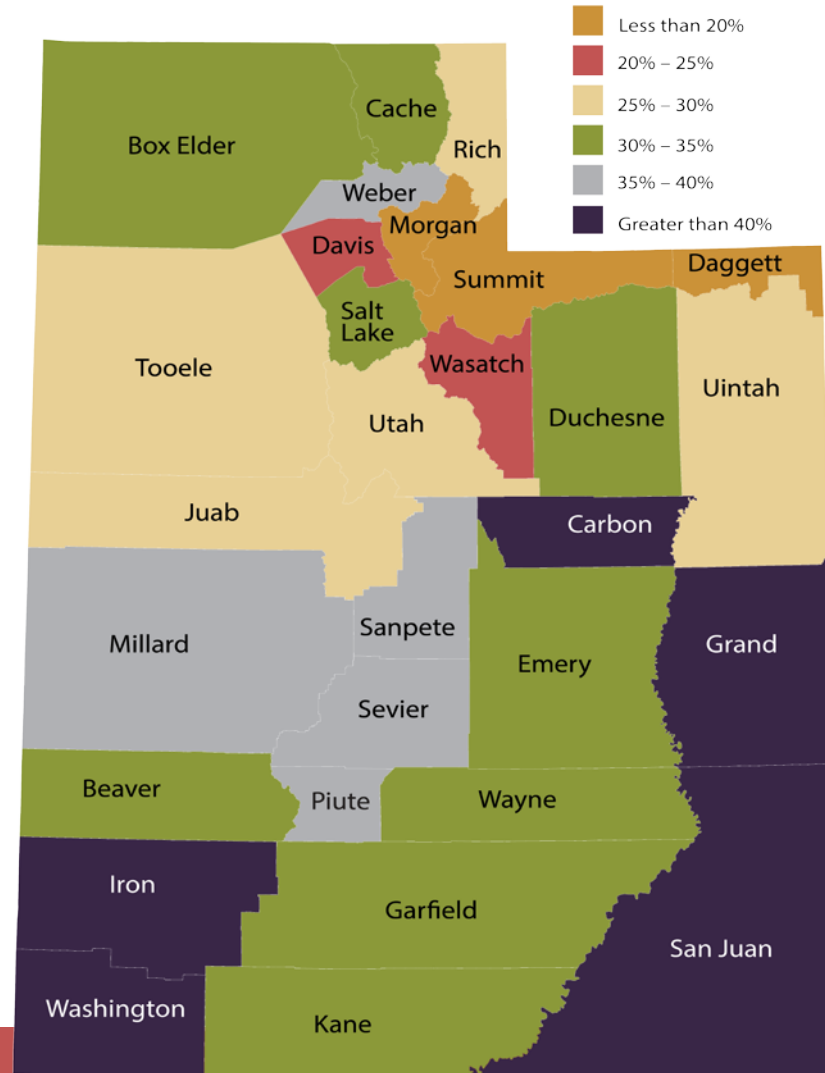
DEFINING INTERGENERATIONAL POVERTY

Utah Adults Receiving Public Assistance (PA)



EVERY CORNER IS IMPACTED!

IGP & At Risk Children by County





INDICATORS OF CHILD WELL-BEING LEADING TO SUCCESS IN ADULTHOOD

EDUCATION

- Kindergarten participation
- Chronic absence rates
- 3rd grade language arts proficiency
- 8th grade math proficiency
- AP participation
- ACT scores
- Graduation rates
- Juvenile justice engagement



FAMILY ECONOMIC STABILITY

- Adult educational attainment
- Adult employment
- Wage levels
- Housing stability



HEALTH

- Access to health care, including physical, mental and dental health
- Rates of abuse and neglect
- Participation in nutrition programs



EARLY CHILDHOOD DEVELOPMENT

- Access to health care beginning in infancy
- Access to quality child care
- Preschool participation
- Kindergarten readiness

FOUNDATIONS TO SUCCESS

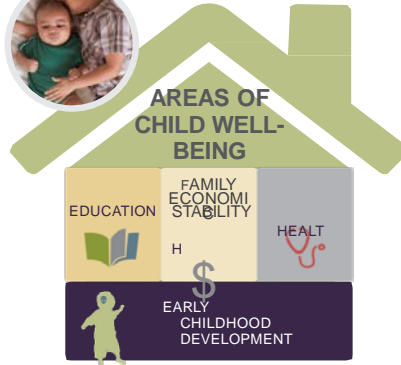
IGP EFFORTS IN RURAL UTAH



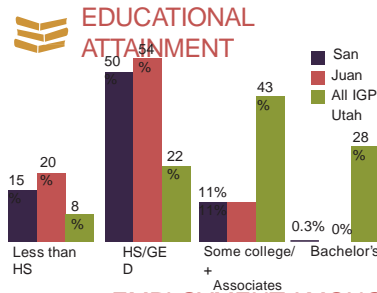
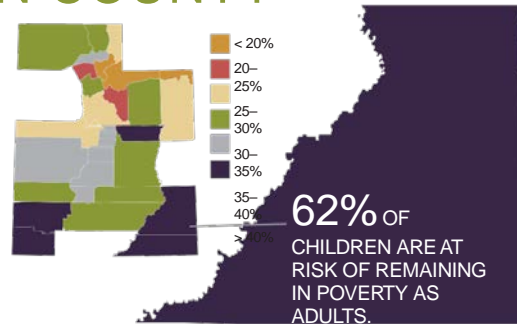
INTERGENERATIONAL POVERTY IN SAN JUAN COUNTY

THOUSANDS OF UTAH FAMILIES

are living in intergenerational poverty — a situation of poverty and public assistance use that continues from one generation to the next. As part of the Intergenerational Welfare Reform Commission, Workforce Services is working with multiple state agencies and other key partners to understand intergenerational poverty and reduce the number of children who remain in this situation as adults.



18% of adults are experiencing intergenerational poverty (children 26%)
65% lack education beyond high school



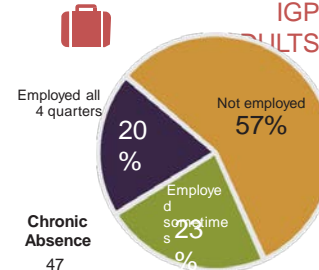
AVERAGE ANNUAL WAGES, 2014

Group	2014 Average Annual Wage
UTAH	\$42,184
UTAH-IGP	\$11,520
SAN JUAN-IGP	\$11,115

UTAH-IGP
SAN JUAN-IGP

School	% IGP Enrollment	% PA Enrollment	Chronic Absence
Tse'Bi'i'Nidzizgai School	38%	31%	47%
Bluff School	37%	22%	38%
Montezuma Greek	30%	30%	39%
Blanding School	25%	24%	48%
Monument Valley High	21%	38%	21%
Whitehorse School	16%	35%	26%
Albert R. Lyman Middle	14%	27%	9%
San Juan High	8%	20%	21%
Monticello School	6%	20%	0%

EMPLOYMENT AMONG IGP ADULTS

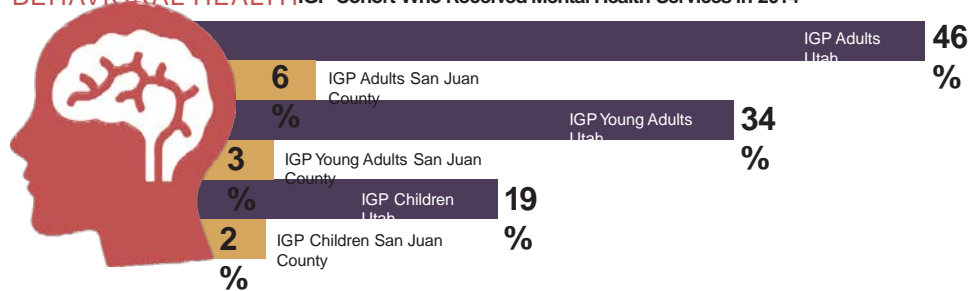


Intergenerational Welfare Reform Commission



INTERGENERATIONAL POVERTY IN SAN JUAN COUNTY

BEHAVIORAL HEALTH IGP Cohort Who Received Mental Health Services in 2014

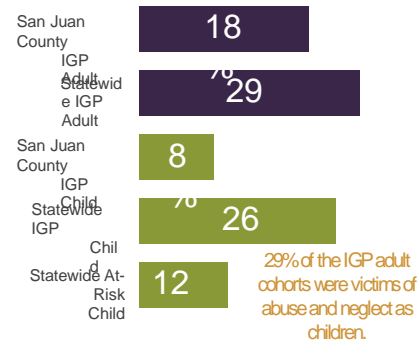


JUVENILE JUSTICE SYSTEM

16% of youth ages 10–17 in San Juan County experiencing intergenerational poverty have involvement with JJS



Victims of Abuse and Neglect



SAN JUAN COUNTY HEALTH ISSUES



Health Access Issues		Mental Health Issues				Healthy Living/Physical Health Issues			
Percentage of Persons with No Insurance Coverage (1)	Percentage of Persons with No Personal Doctor (2)	Percentage of Persons with Poor mental health in 7 or more of past 30 days (2)	Percentage of Persons Ever Told Have a Depressive Disorder (2)	Suicide Rate per 100,000 population (3)	Percentage of Adults eating less than three vegetables each day (2)	Percentage of Adults Who are Obese (2)	Percentage of Adults Reporting Fair or Poor Health (2)	Percentage of Adults Not Getting Recommend Aerobic Physical Activity (2)	
24	34.3	13.5	18.2	25.4*	87*	24.6	17	48.5	

(1) Utah BRFSS 2011-2013 all ages age-adjusted; (2) Utah BRFSS 2011-2013 Adults aged 18 and above age-adjusted; (3) Utah Death Certificate Database. *Use caution in interpreting; the estimate has a coefficient of variation >30% and is therefore deemed unreliable by Utah Department of Health standards.

Indicates that county confidence interval is higher than state value



DATA AND RESOURCES

- Rural Planning Grants
- Labor Market Information
- TANF Grants - Dashboard
- Local DWS Resources
- Leveraged Resources
 - SAMHSA Grants through Utah Dept of Human Services
 - Mental Health Early Intervention
 - Home Visiting Programs

Interagency Collaborations

- Interagency Collaborations
 - Dept of Health Home Visiting Programs
 - Relationship/Parenting Workshops
 - System of Care
 - Mental Health Early Intervention
 - Domestic Violence Prevention
 - Pre-K Services ***
 - Homeless Prevention

DEPARTMENT OF WORKFORCE SERVICES

WORKFORCE DEVELOPMENT DIVISION

*SERVING FAMILIES, MAKING A
DIFFERENCE*





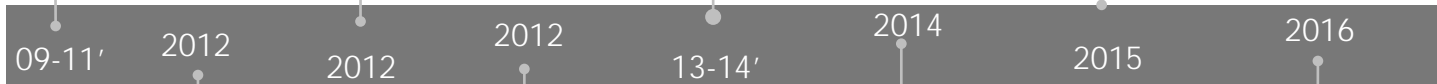
TANF caseloads increase as the nation is impacted by the Great Recession

Utah Legislature passes the Intergenerational Poverty Mitigation Act

Next Generation Kids was created as a two generation approach. Use of implementation Science

TANF Grants Awarded to Community Programs to provide services to families that help lead to employment.

Utah was chosen to be part of the TANF Systems to Family Stability Academy under the Office of Family Assistance



Recovery - TANF caseloads decline as Utah unemployment rates decrease and Utah begins to recover from the nationwide recession)

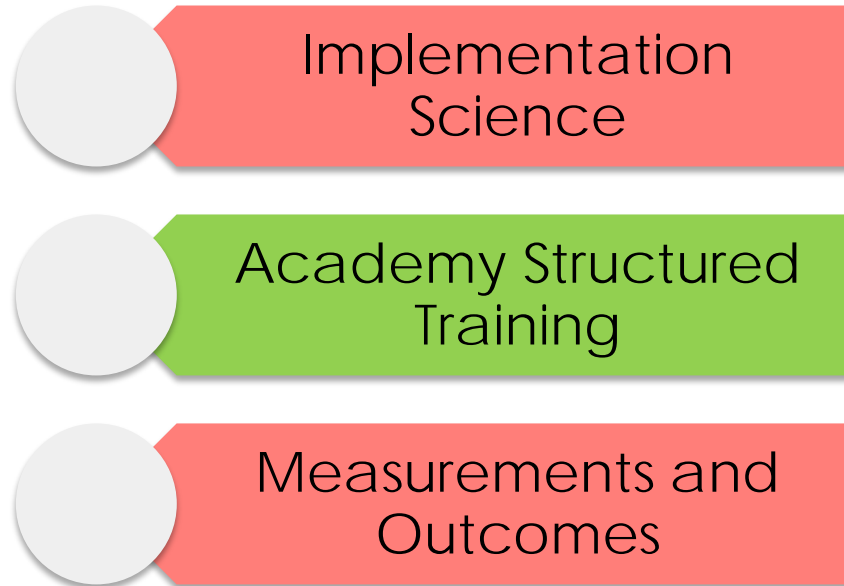
IGP data shows that we must focus on the whole family, not just parents, by building adult capacities and focusing on key areas

Family Focus Case Management was introduced

FEP Refocus / Family Focus Case Management training rolled out

Family Focused Case Management

TWO-GENERATION APPROACH TO SERVING FAMILIES



Family Focused Case Management

Training Modules:

- Coaching Training – All Supervisors/Managers
- Command Center Training
- Intro to Human Development / Case Management
- Motivational Interviewing I, II, III
- Case Management I, II, III
- Executive Functioning
- Trauma Awareness



One moment in time for staff
One lifetime of opportunity for families

Presenter:

Sisifo Taatiti

Utah Department of Workforce
Services

staatiti@utah.gov

801-526-4370