



TANF & Child Welfare Partnering for Prevention:

PASCUA YAQUI'S SITE JOURNEY

The Administration for Children and Families' Office of Family Assistance convened the Families Are Stronger Together Learning Community (FAST-LC) in partnership with the Children's Bureau to support eight States and two Tribes in forming partnerships between Temporary Assistance for Needy Families (TANF) and child welfare programs focused on preventing families' involvement in the child welfare system. The FAST-LC took place between September 2023 and September 2024.

Motivation for Change

Pascua Yaqui's Children's Services and Adult Services departments work in tandem to support families through a variety of programs and outreach, including a federally sponsored Tribal TANF Child Welfare (TTCW) grant through 2025. The TTCW program has supported increased collaboration between Children's Services and Adult Services. Building on the momentum of TTCW, both Children's Services and Adult Services leaders envisioned a restructuring of TANF and child welfare programs through a shared continuum of care model. Through this model, the FAST-LC team at Pascua Yaqui hoped to further integrate and align the goals and services of both programs under a common prevention/intervention framework.

Partnership Innovations

The FAST-LC provided opportunities for staff from Adult Services and Children's Services to connect about a cohesive vision for the continuum of care. Due to frequent staff turnover and heavy workloads at both departments, FAST-LC meetings were a space for staff to create a collective understanding of how different programs can partner to support families throughout their individual journeys.

The FAST-LC was also an opportunity for staff from Adult Services and Children's Services to collectively define intervention and prevention in their programs and begin to orient their teams alignment with the continuum of care. Staff from these departments came together to present the continuum of care model to the Pascua Yaqui Tribal Council.

Prevention Innovations

The continuum of care model aligns programming and services across Children's Services and Adult Services along a prevention and intervention continuum, sharing the same set of overarching goals for families regardless of the services they are receiving. The model reorients programming in both departments, including TANF and Child Protective Services, into a shared system of care for families. Programs determined for themselves whether they offered primarily prevention- or intervention-based services, rooted in the definitions of prevention and

About Pascua Yaqui

The Pascua Yaqui Tribe is located outside of Tucson, Arizona in Pima County. Citizens of the Tribe primarily live on the reservation or in Tucson or Phoenix, Arizona.

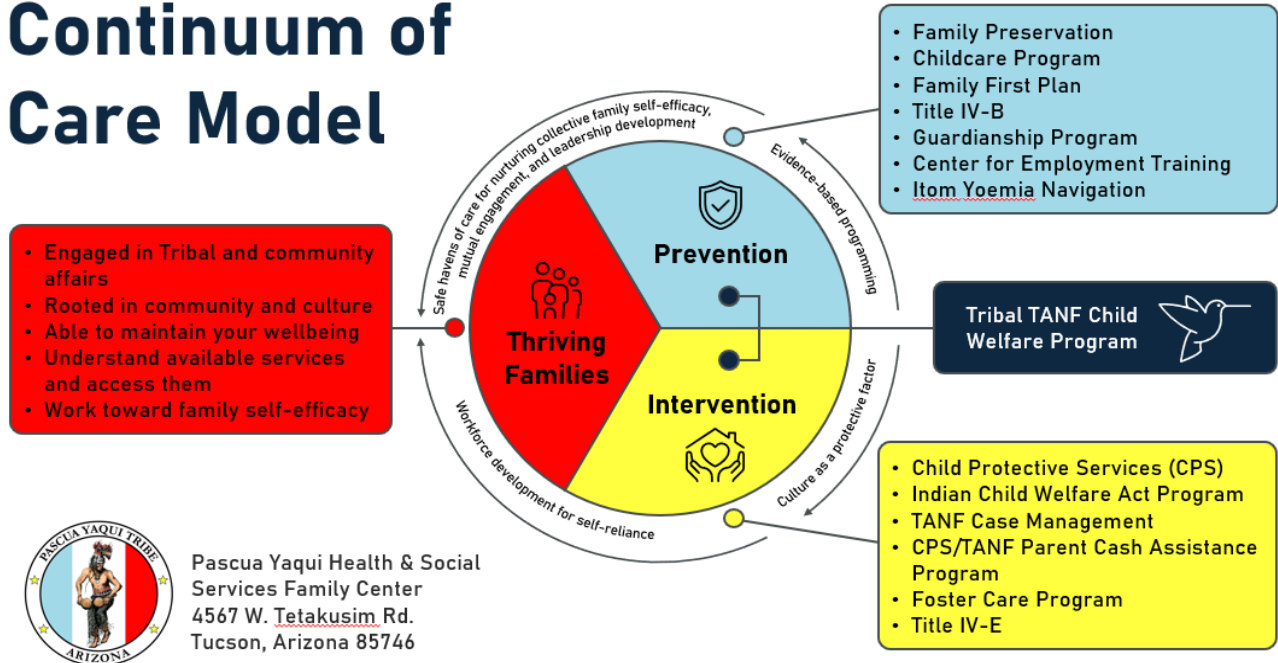
The Pascua Yaqui Social Services Agency is divided among Children's Services and Adult Services, which respectively house their Child Protective Services and TANF programs. The Tribe also has an active Tribal TANF Child Welfare (TTCW) program.

Staff from TTCW, TANF, Children's Services, and the broader Social Services agency were engaged in the FAST-LC.



intervention created through the FAST-LC project. Prevention- and intervention-based services work together to support families toward a shared vision of family thriving. This vision is rooted in culture as being a protective factor against further need of intervention services. Families may move between prevention- and intervention-based services depending on their needs but are always working toward the thriving family vision. Building on the momentum from the TTCW collaboration, the continuum of care model clarifies the relationships between Adult Services and Children’s Services for both staff and families.

Continuum of Care Model



Lessons Learned

Key takeaways and lessons learned from this journey:

- **Culture as a protective factor.** Culturally grounded behaviors are a critical part of what it means to be a thriving family. Being engaged with community and tribal affairs is integral to overall well-being.
- **Supporting staff through change is key.** Through the FAST-LC, Pascua Yaqui put additional focus on how best to support staff coming into alignment with shared continuum of care goals. Their understanding is key to that shift being effective.
- **Sometimes, less is more.** Through the FAST-LC, Pascua Yaqui distilled a large volume of continuum of care learning into a simple graphic and a redesigned organizational chart. When walking families or staff through the continuum of care, taking a step back and having something that can communicate this vision more clearly is helpful.

