

Collaborating with Child Support: Early learning from CSPED

Lauren M. Antelo
Senior Program Specialist
Division of Program Innovation, Federal Office of Child Support
Enforcement

Gateway to Opportunity: Improving Parental Employment and Family Well-Being Outcomes
September 1, 2015

Federal Office of Child Support Enforcement (OCSE)

- We partner with state, tribal and local child support agencies and others to **encourage parental responsibility so that children receive financial, emotional, and medical support from both parents**, even when they live in separate households. We **promote effective child support enforcement tools coupled with family-centered customer service.**

State, tribal and local child support agencies

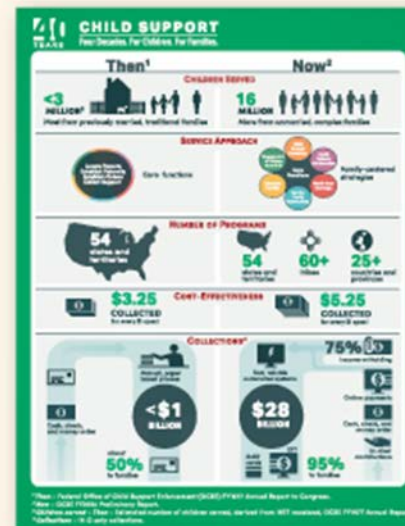
- Families receive services from the local child support office in their state or tribe. In addition to mandatory referrals from TANF, Medicaid, and other programs, either parent may apply for services. Grandparents or other custodians may also apply.

- Child support agencies provide the following services:
 - locate noncustodial parents
 - establish paternity
 - establish and enforce support orders
 - modify orders when appropriate
 - collect and pay child support payments

Child support has improved over the last 4 decades.

○ <http://www.acf.hhs.gov/programs/css/resource/child-support-40-years>

Then & Now CHILD SUPPORT



Why partner with child support?

- The child support program serves 80% of poor custodial families and has a strong stake in seeing that poor noncustodial parents are able to support their children (Lippold and Sorensen 2013).
- Once parents find a job, wage withholding ensures that child support goes to custodial families.

Why employment programming?

- Many noncustodial parents have limited earnings and ability to pay child support (Garfinkel et al. 2009; Sorensen and Zibman 2001)
- Prior research shows child support-led employment programs are more likely to yield results for noncustodial parents and their children (Doolittle et al. 1998)

OCSE launches Child Support Noncustodial Parent Employment Demonstration (CSPED)

- Built on previous demonstrations, such as Parents Fair Share.
- To test the efficacy of child support-led employment programs.
- And whether these programs increase the reliability of child support payments.



Core program components

- Child support-led
- Core services: enhanced child support services, employment assistance, parenting education delivered in a peer support format, and case management.
- Domestic violence plan.

The states and national evaluators

- 5-yr grants to CA, CO, IA, OH, SC, TN, TX and WI.
- Evaluation grant to WI:
 - Institute for Research on Poverty, University of Wisconsin
 - Mathematica Policy Research

Recruitment and engagement

- Tailored messages, “warm handoffs,” and same-day enrollment.
- Rapid engagement in services, developing trusting relationships, and intensive follow-up.
- Incentives and work supports to encourage program participation and employment.

Service delivery

- Enhanced child support services:
 - order reviews, modifications, suspending enforcement activities, reinstating driver's licenses, and compromising state-owed arrears.
- Parenting sessions:
 - parenting responsibilities and skills, co-parenting, and the importance of parental involvement.

Early lessons

- Deploy child support workers who support the goals to identify and recruit participants.
- Develop services that take into account the challenges faced by the target population.
- Design services to promote sustained participant engagement.
- Invest in strong partnerships and communication systems.

Resources

- [Child Support websites and general contact information](#)
- CSPED Implementation Report (*Released today!*)
- [CSPED Fact Sheet](#)
- CSPED Success Stories
 - [August 2014](#)
 - [September 2014](#)
 - [September 2015](#)
- [Policy Ideas and Principles to Advance Two-Generation Efforts](#)
- [Finding Fatherhood: New Hope for Families in Colorado](#)

Thank you!

Please follow-up with any questions or with assistance reaching out to your local child support agency:

Lauren M. Antelo

lauren.antelo@acf.hhs.gov

Senior Program Specialist

Division of Program Innovation

Office of Child Support Enforcement

Administration for Children and Families

U.S. Department of Health and Human Services