

Washington State Successful Collaborations Between Child Support and TANF Programs

Babs Roberts, Director
Community Services Division, Economic Services Administration
Washington State Department of Social and Health Services

August 2016

Why Collaborate?

Transforming
Lives

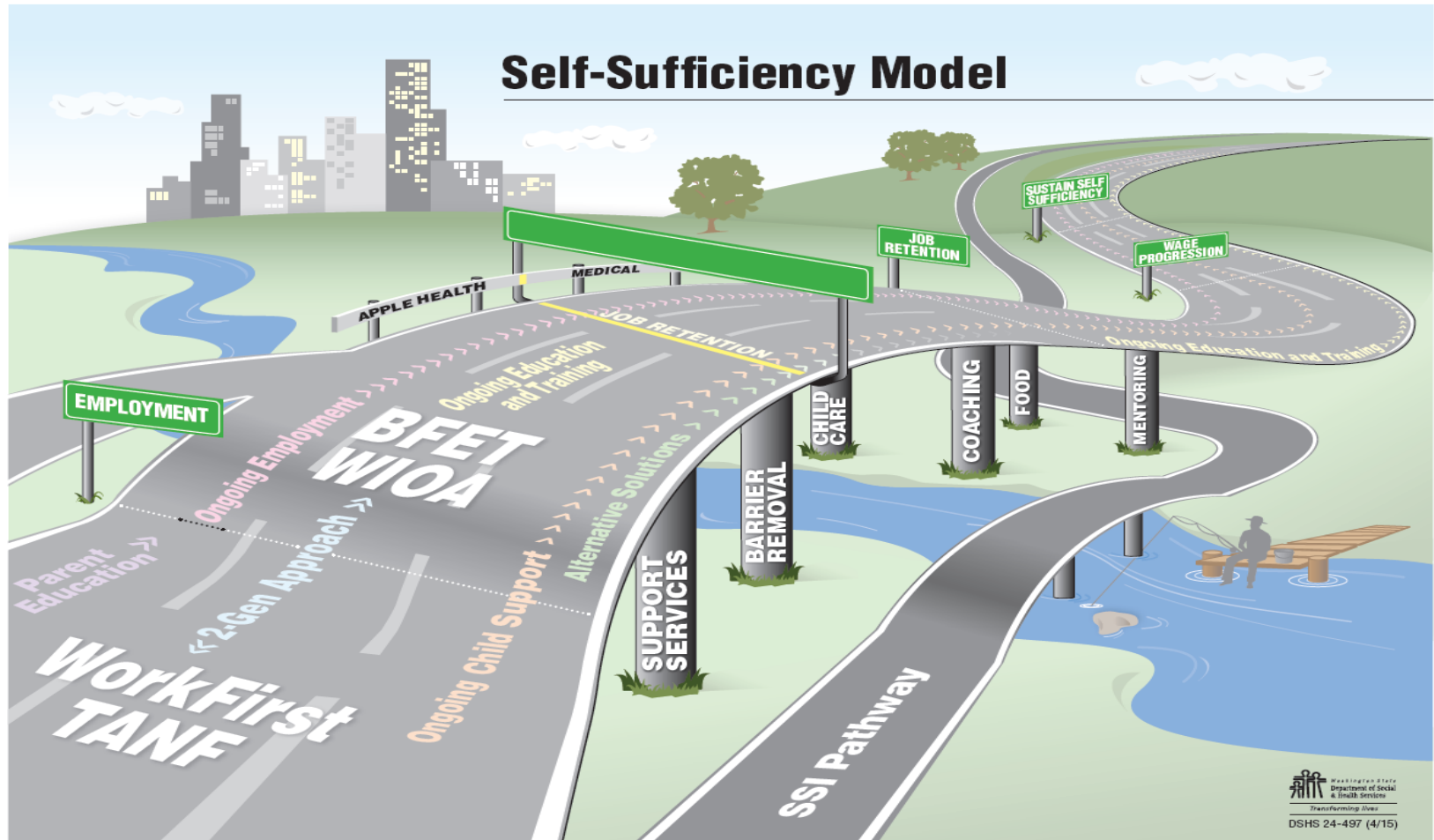
Financial Support
for both parents
and children

**Focus on the
Whole Family**

**Reducing
Intergenerational
Poverty**



Self-Sufficiency Model



Examples of Collaboration

- ✓ Alternative Solutions Program
- ✓ Systems to Family Stability Policy Academy Pilot Sites



Division of Child Support (DCS) Alternative Solutions

Transforming
Lives

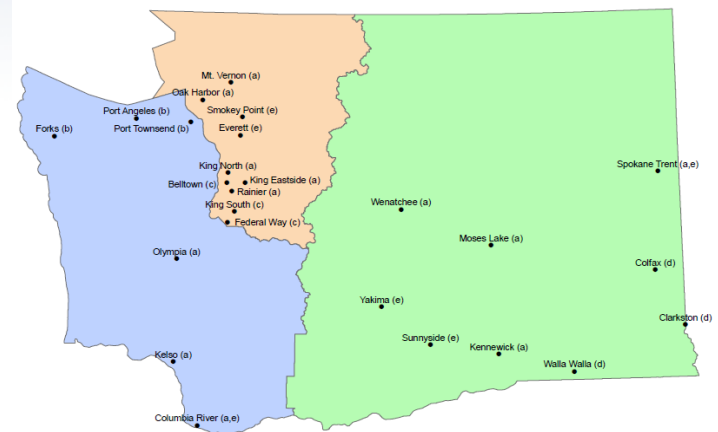
- ✓ 50 % of DCS clients are poor or near-poor*
- ✓ 15 % of custodial parents - currently TANF
- ✓ Financial support from both parents improves the life outcomes of kids
- ✓ Non-custodial parents who support their children financially are also more likely to see them regularly and provide emotional support, which leads to better life outcomes for the family.

DCS Alternative Solutions What We Are Doing Differently?

- ✓ Voluntary, Permanently Funded Program
- ✓ Comprehensive Case Management
- ✓ Education, Employment, and Training
 - BFET, RISE, Employment Pipeline
- ✓ Connections to Barrier Removal Services
- ✓ Trauma-Informed Approach

DSHS Systems to Family Stability

- ✓ Administration for Children and Families Systems to Family Stability National Policy Academy
- ✓ A strategic approach to leading changes in how the state works with families on TANF
- ✓ Access to national expertise and research
- ✓ In Washington, we asked for pilot proposals from local field offices
- ✓ Currently testing 16 pilots in 2 local offices



Example of Pilot

Wenatchee CSO – This pilot provides intensive wrap-around services including weekly meetings, case staffing, whole family coaching and life skills programs. The pilot connects with the Division of Child Support by inviting the Support Enforcement Officer to the initial interview with the parent, to explain what happens with establishing child support.

- ✓ Targeted Population: TANF Cyclers
- ✓ Service Enhancement Areas: Multi-Generational Approach to Poverty and Coaching Case-Management Interventions

Example of Pilot

King North CSO – This pilot provides employment and training resources via an orientation / resource fair – targeted to TANF families who cycle on and off of TANF. In addition, an orientation is held for non-custodial parents. Orientations provide clients with a more comprehensive understanding of the full array of employment / training resources available via DSHS, colleges, local community resources, etc. Targeted households (and kids) will be invited to an employment / training orientation, (pilot is testing different days and times, including Saturdays).

- ✓ Targeted Population: Disconnected Youth and TANF Cyclers
- ✓ Service Enhancement Area: Multi-Generational Approach to Poverty

Contact:

Babs Roberts, Director

Community Services Division, Economic Services
Administration, DSHS

Babette.Roberts@dshs.wa.gov