

Life After TANF

David Stillman

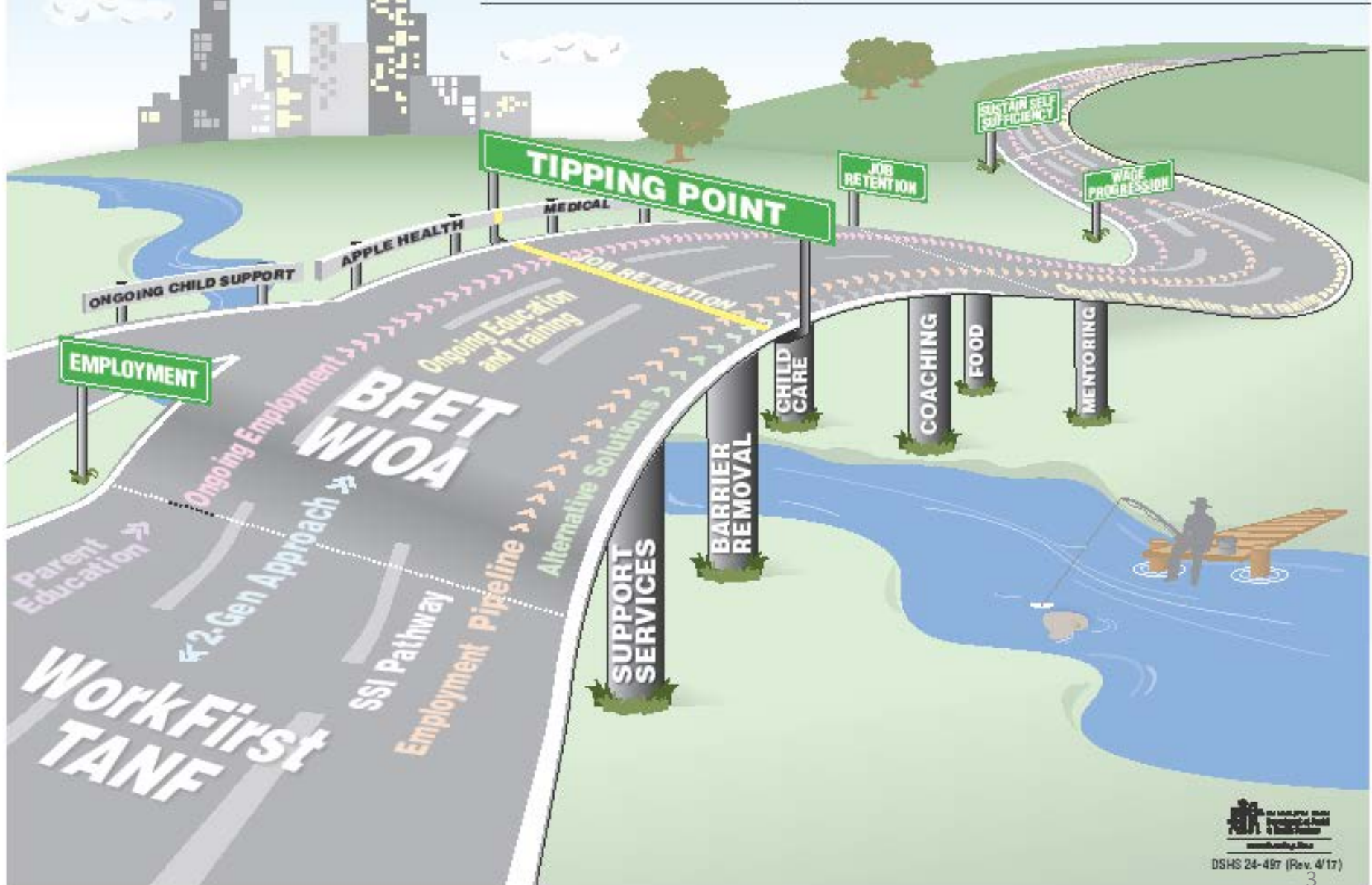
Assistant Secretary, Washington State Department of Social and
Health Services

Economic Services Administration

2025 GOAL

REDUCE
POVERTY BY HALF
IN A WAY THAT ELIMINATES
DISPARITIES.

Self-Sufficiency Model

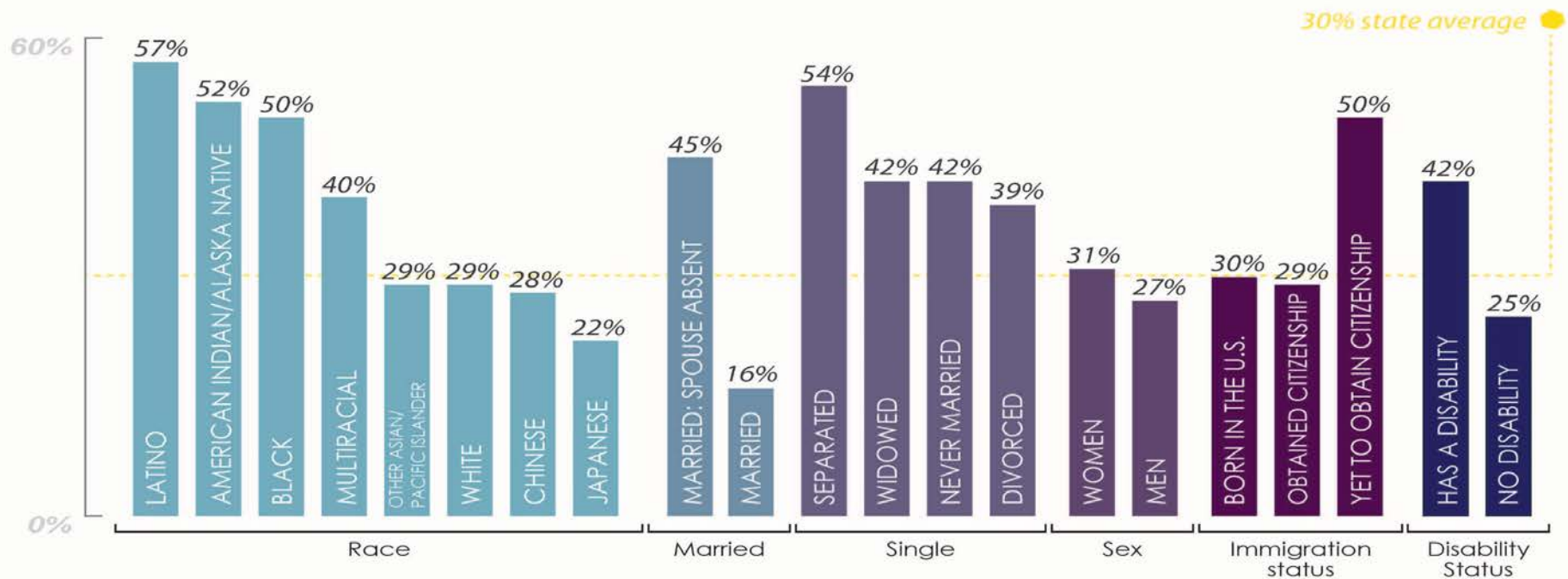


Our approach

- We developed a model of Self-Sufficiency (the “Super Highway”) to guide our thinking about how we reduce poverty systemically and comprehensively.
- It visually portrays the reality that TANF Exit does not end the need for services.
- We are revising our case management model to focus on a whole-family and intergenerational approach.
- An alphabet soup of services are available to provide continuing resources: SNAP, BFET, WIOA & Workforce Services, and WCCC.
- We have deliberately established 200% of the Federal Poverty Level as the marker for how we define our goal.

WHAT POVERTY LOOKS LIKE NOW

Percentage of people living below 200 percent of the federal poverty level, WA 2015



Some of Our Current Initiatives & Ongoing Work

- SNAP E&T
- RISE (USDA Grant Funded Pilot)
- Financial Capabilities Pilot
- Alternative Solutions
- Concurrent Benefits
- Home Visiting
- Employment Pipeline
- Partnership for Re-Employment Program (PREP)
- Transportation Pilot Expansion
- Co-Parenting Pilot
- Right-Sized Orders
- Transforming Case Management (& Family Coaching)

Thank you!

For specific information, please contact:

David Stillman

(O) 360-725-4350

(C) 360-790-1897

David.Stillman@dshs.wa.gov