

Welcome! As you're joining...

Share with us in the chat:

- What state, locality, or tribe you represent
- What brought you to today's webinar



Welcome to our TLC webinar!

Built on a legacy of OFA-sponsored Policy Academies and Learning Communities

An 18-month transformational endeavor supported by intensive training and technical assistance

Six to ten state, tribal, and/or local TANF program teams come together for better outcomes

What's on *everyone's* minds?

How might we reimagine TANF programs to support family economic independence and mobility in a post-pandemic world?



Adapting to new
in-person and virtual
realities



Evolving and
responsive systems

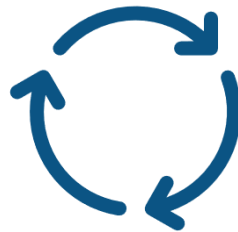


Building a post-
pandemic workforce
for the new
economic reality

What does the TLC include?



**Access to
relevant
expertise,
training, and
coaching**



**A framework
for change:
*Learn,
Innovate,
Improve (LI²)***



**Learning in
community:
site visits,
exchanges,
convenings**

Coaching, expertise, and training

Biweekly
site
coaching

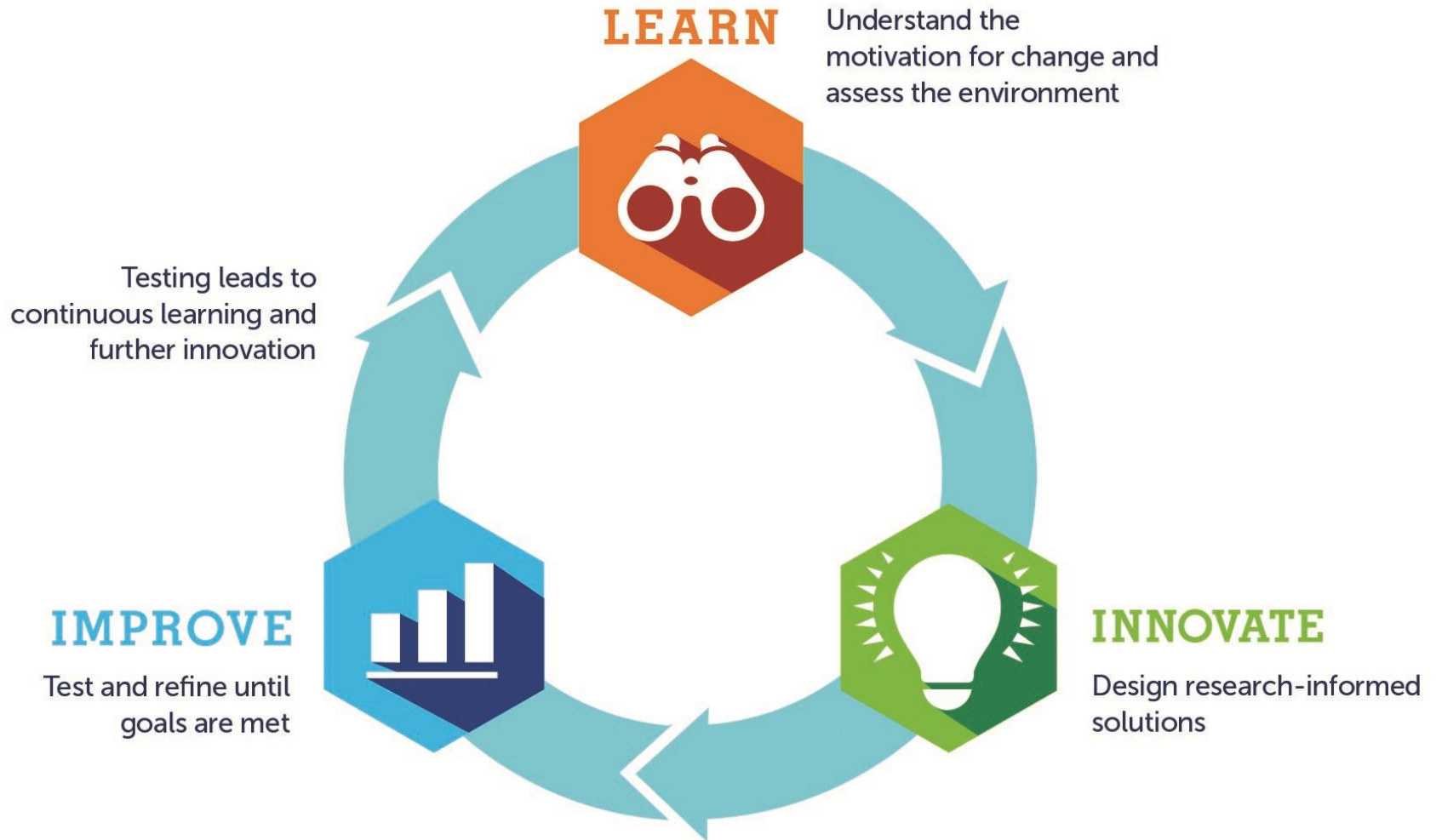
Up to 3 site
visits or
team
meetings

Trainings on
cutting-edge
approaches

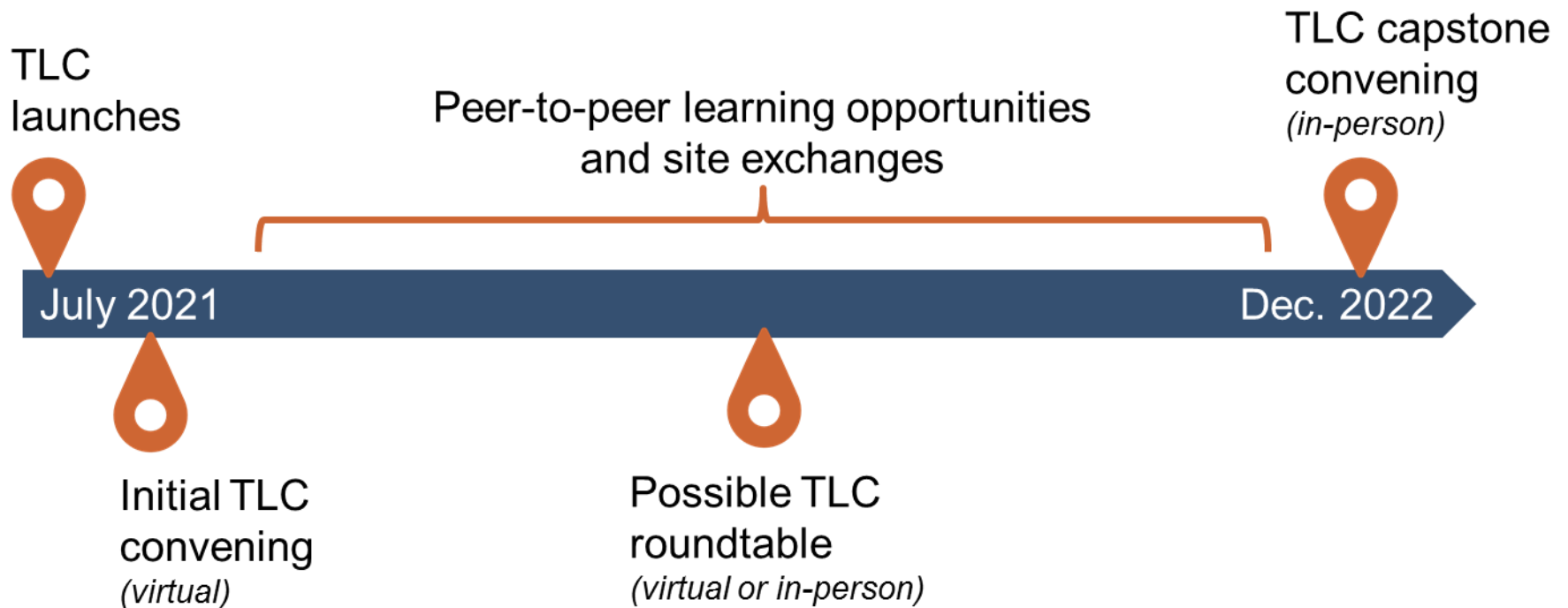
Webinars
with relevant
experts and
thought
leaders

New tools
and
products to
support
innovation

A framework for change: LI²



Learning in community



What is expected of sites?

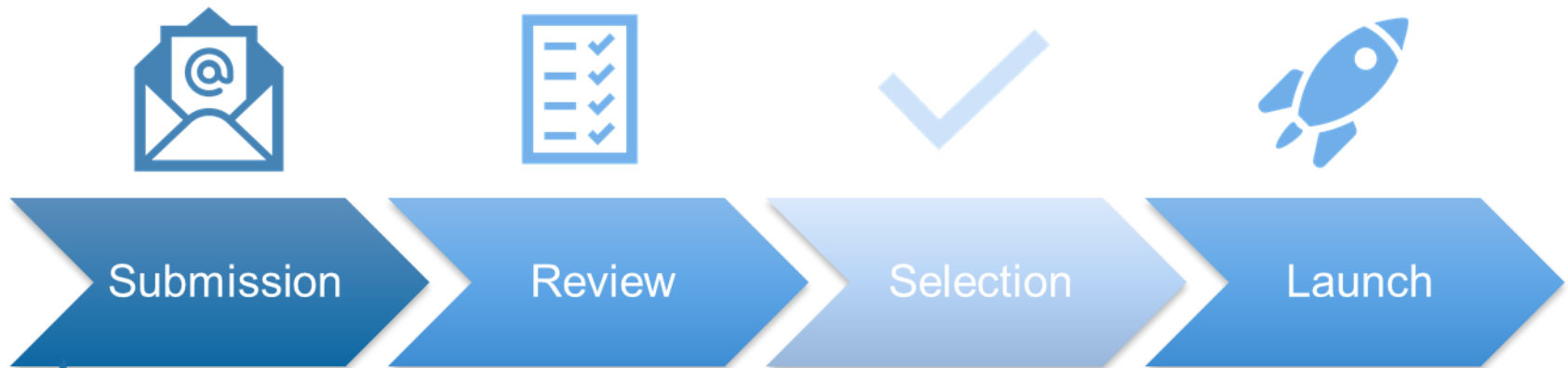


Long-term commitment, engagement, and progress toward program improvement and better outcomes for TANF families



Site implementation teams responsible for spearheading and sustaining the work

How do I join the TLC?



Don't forget: The submission deadline is Wednesday, June 23rd at 6pm EDT!

Send completed self-nominations to:
TANFLearningCommunity@blhtech.com

What has this looked like in the past?

Gerrie Cotter

Project Manager

Comprehensive Case Management and Employment Program

Ohio Department of Job and Family Services

What Has This Meant for My Program?



- **Expansive Technical Assistance**

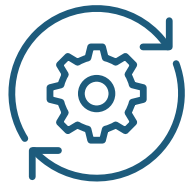
Research-Resources-Review



- **Peer Learning and Exchanges**

Connecting with Peers Driving Similar Changes

Accessing Peers from Prior Learning Communities



- **Learn, Innovate, Improve (LI²)**

Identify Problems-Innovate Solutions-Road Test
and Refine

Answers to your questions

Please ask any questions you have via the chat or unmute your line and share your questions with us

